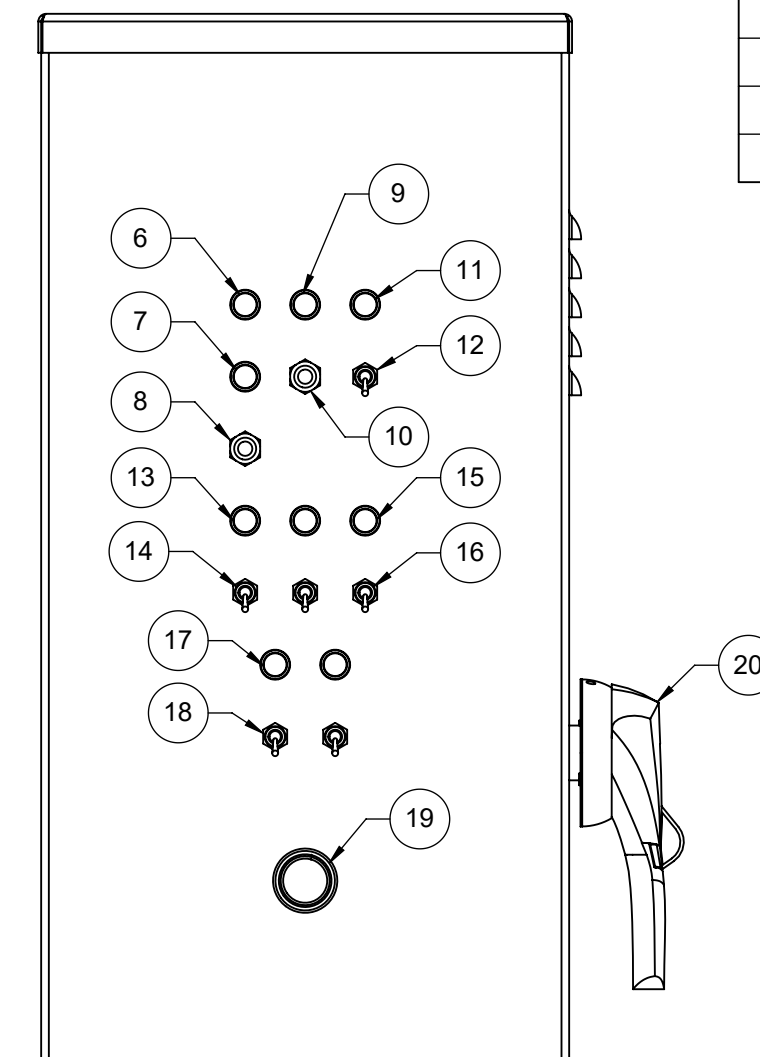
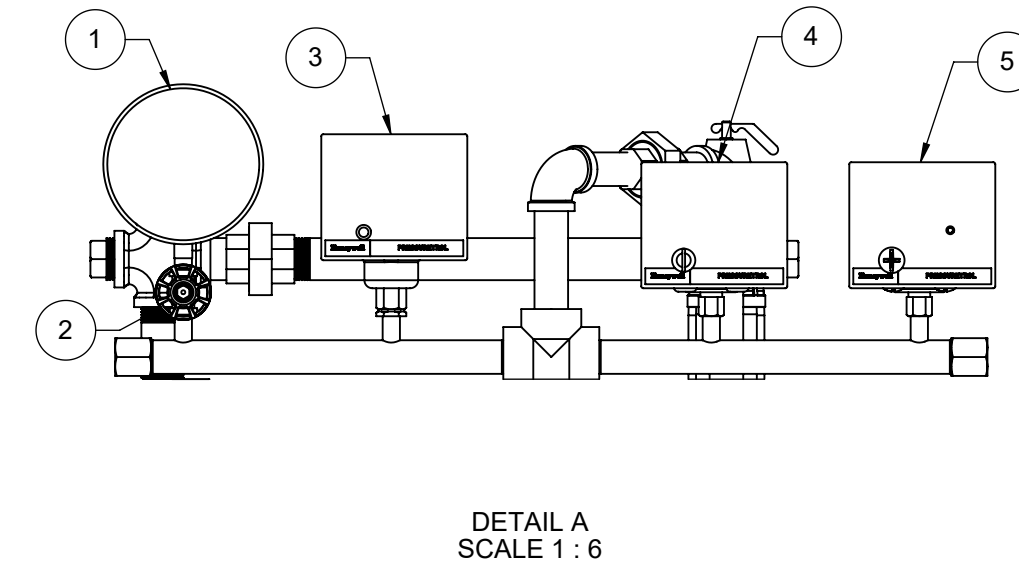
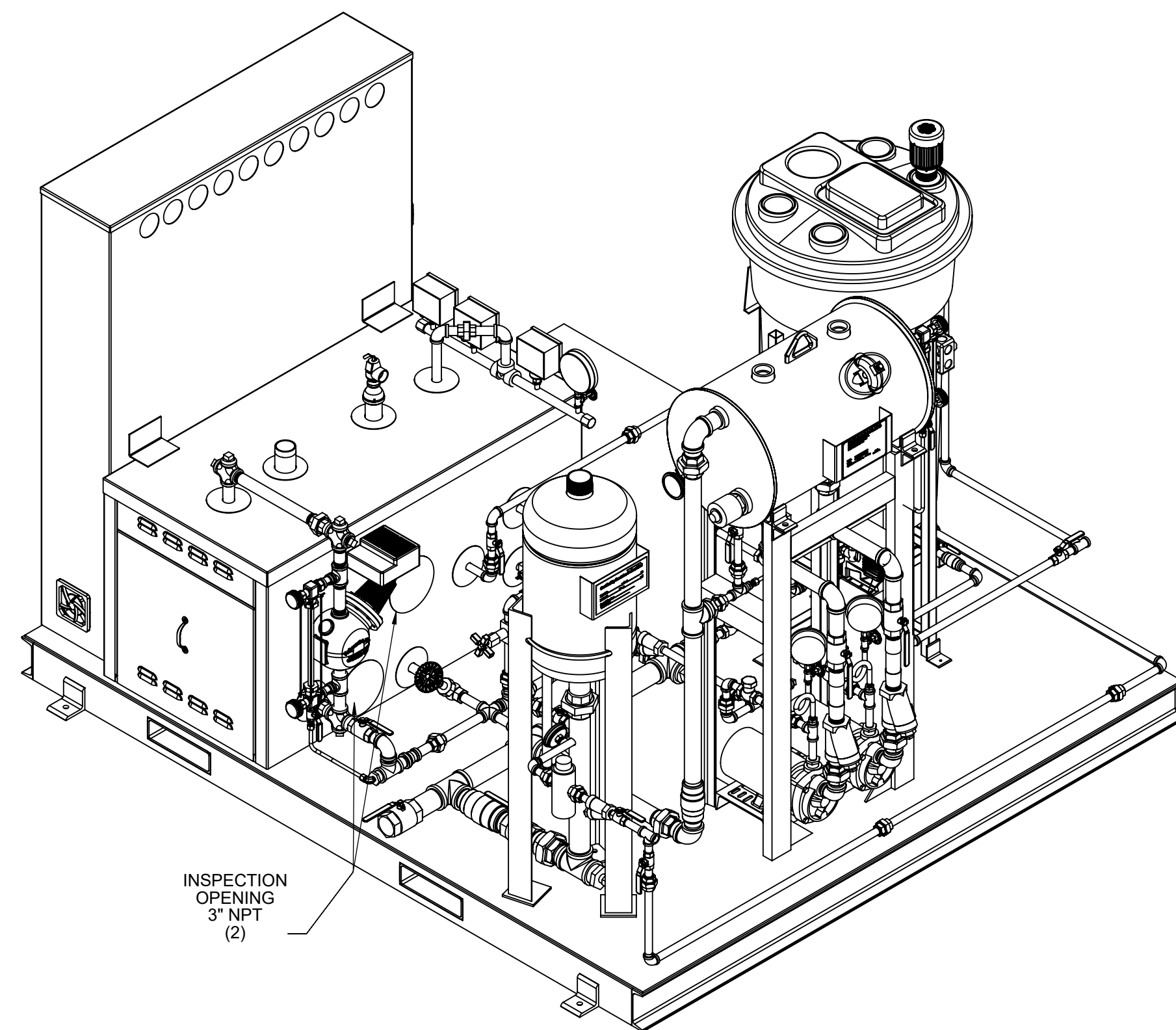
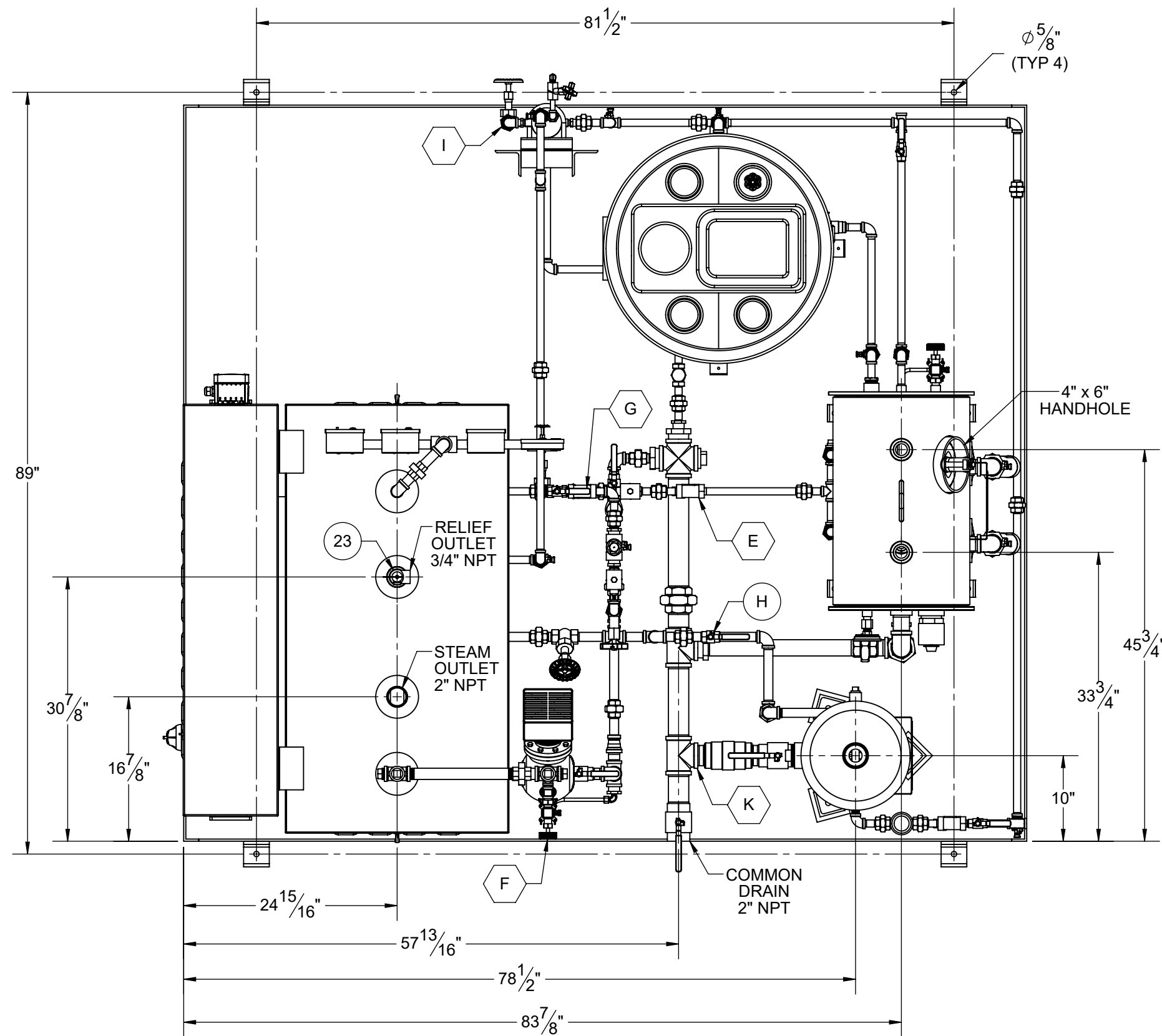
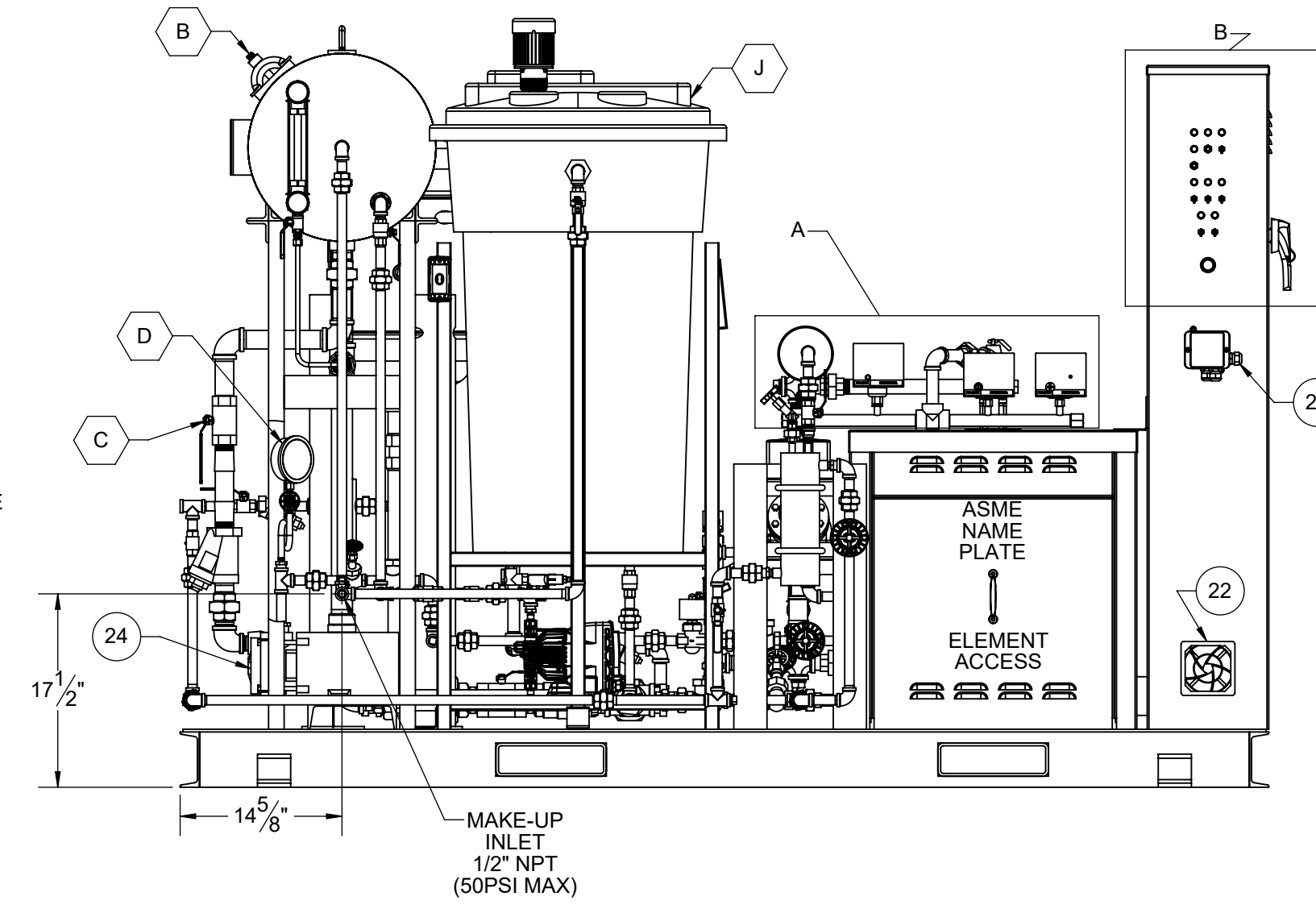
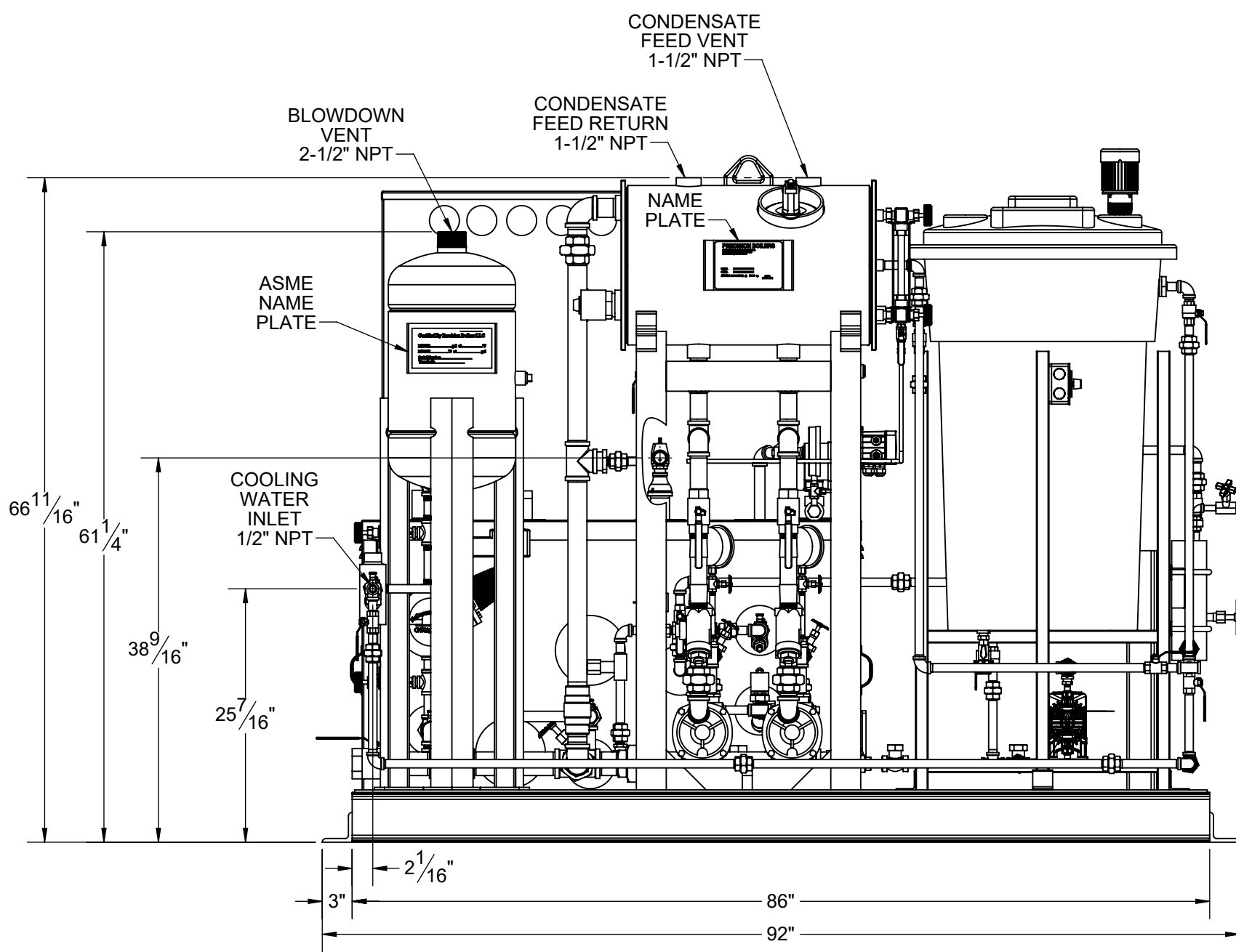
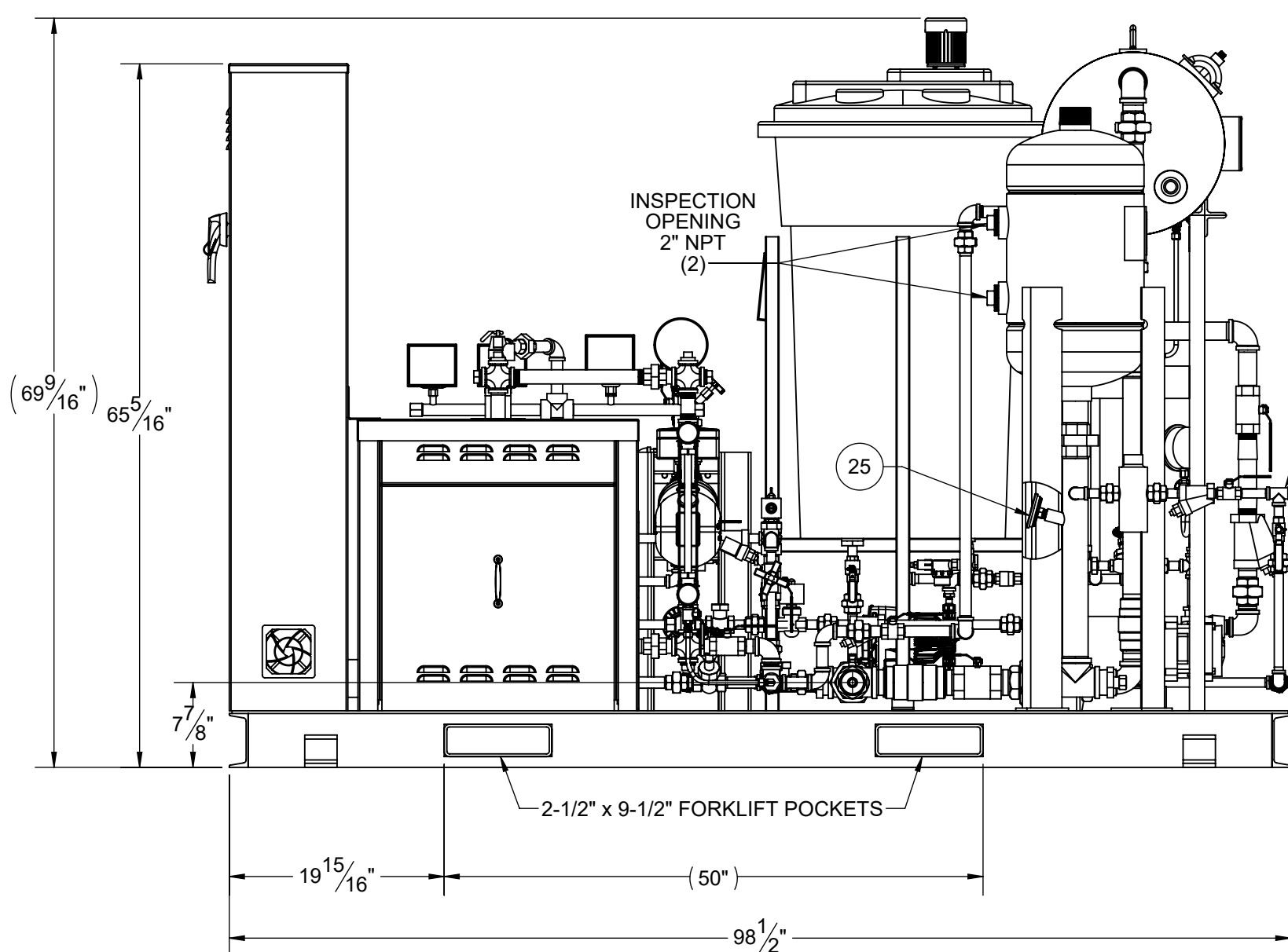


SHIP LOOSE ITEMS		
ITEM	DESCRIPTION	QTY.
1	1-1/2" NPT STEAM SEPARATOR	1



ITEM	DESCRIPTION	QTY.
1	4-1/2" DIAL - PRESSURE GAUGE (0-30 PSI)	26
2	1/4" NPT NEEDLE VALVE	27
3	PRESS. CONTROL, L91B-1035 (-5-15 PSI)	28
4	PRESS. LIMIT, L404F-1060 AR (2-15 PSI)	29
5	PRESS. LIMIT, L4079B-1033 MR (2-15 PSI)	30
6	PILOT LIGHT - RED "HIGH PRESSURE"	31
7	PILOT LIGHT - RED "ALARM"	32
8	PUSH BUTTON - "ALARM SILENCE"	33
9	PILOT LIGHT - RED "LOW WATER"	34
10	PUSH BUTTON - "LWCO RESET"	35
11	PILOT LIGHT - AMBER "POWER ON"	36
12	2 POSITION SWITCH - "POWER ON"	37
13	PILOT LIGHT - (2) AMBER "STEP CONTROL"	38
14	2 POSITION SWITCH - (2) "STEP CONTROL"	39
15	PILOT LIGHT - AMBER "PREHEAT ON"	40
16	2 POSITION SWITCH - "PREHEAT ON"	41
17	PILOT LIGHT - (2) GREEN "PUMP ON"	42
18	H.O.A. SWITCH - (2) "PUMP H.O.A."	43
19	ALARM BUZZER	44
20	200A FUSED DISCONNECT	45
21	CONDUCTIVITY CONTROLLER	46
22	(2) COOLING FAN	47
23	RELIEF VALVE - (SET @ 15 PSI)	48
24	(2) PUMP - MTH T41C, 1/2 HP - 460/3/60	49
25	BDS TEMP GAUGE - 3" DIAL (20-240°F)	50
A	COLD WATER PIPING	51
B	CONDENSATE FEED PIPING	52
C	(2) SUCTION PIPING	53
D	(2) DISCHARGE PIPING	54
E	FEEDWATER PIPING	55
F	LEVEL CONTROL PIPING	56
G	SURFACE SKIMMER PIPING	57
H	BOILER BLOWDOWN PIPING	58
I	SAMPLE PIPING	59
J	CHEM FEED PIPING	60



51	N/A
52	N/A
53	1/2" NPT SOLENOID VALVE
54	1/2" NPT METERING VALVE
55	3/4" NPT GLOBE VALVE
56	(2) 3/4" NPT BALL VALVE
57	3/4" NPT CHECK VALVE
58	SAMPLE COOLER
59	(2) 1/2" NPT BALL VALVE
60	1/2" NPT GLOBE VALVE
61	1/4" NPT METERING VALVE
62	50 GALLON TANK
63	FEED PUMP - 1/3 HP, 120/1/60
64	AGITATOR - 1/4 HP, 120/1/60
65	(3) 1/2" NPT BALL VALVE
66	1/2" NPT CHECK VALVE
67	1/2" NPT CHEMICAL QUILL
68	(2) 1/2" NPT CHECK VALVE
69	2" NPT CHECK VALVE
70	(2) 2" NPT BALL VALVE
71	N/A
72	N/A

NOTES

- 1.) Boiler to be constructed per ASME Boiler and Pressure Vessel Code, Section IV, "H" designator and National Board registered.
 - 2.) Boiler is to comply with CSD-1, NEC, and UL requirements, and shall bear the UL label.
 - 3.) Overhead clearance to be 24" minimum, 34" side clearance is required for element removal, and 36" clearance is required for control cabinet door.
 - 4.) Amps: 105
 - 5.) Steps:
 - 2 Steps @ 40kW
 - 1 Step @ 7.5kW (Preheater)
- CF-16-020S**
- 1.) Unit is non-code.
- BDS-1224-75-2-2.5**
- 1.) Unit to be constructed per ASME Boiler & Pressure Vessel Code, Section VIII, "U" Designator & National Board registered.



JOB NAME: KIEWIT / CLIMWORKS			
CO #: 17397	DATE: 3/15/22	APPVD:	DATE:
DWG. DESCRIPTION:	DIMENSIONAL DRAWING		
DWG. NO. SKIDPACK-86	REV: 0		

PRECISION BOILERS AND ITS SERVICES ARE PROVIDED AS A SERVICE TO OUR CUSTOMERS. THE INFORMATION CONTAINED HEREIN IS FOR INFORMATIONAL PURPOSES ONLY AND IS NOT TO BE USED FOR ANY OTHER PURPOSE. THE INFORMATION CONTAINED HEREIN IS NOT TO BE USED FOR ANY OTHER PURPOSE. THE INFORMATION CONTAINED HEREIN IS NOT TO BE USED FOR ANY OTHER PURPOSE.

FINISH: 1/8" GRAY
SCALE: 1:16
WEIGHT: 3042.06 lbs.
TOLERANCES
FRACTIONAL: ± 1/32"
ANGULAR: ± 3°
D 101 ± .005
1001 ± .0005